

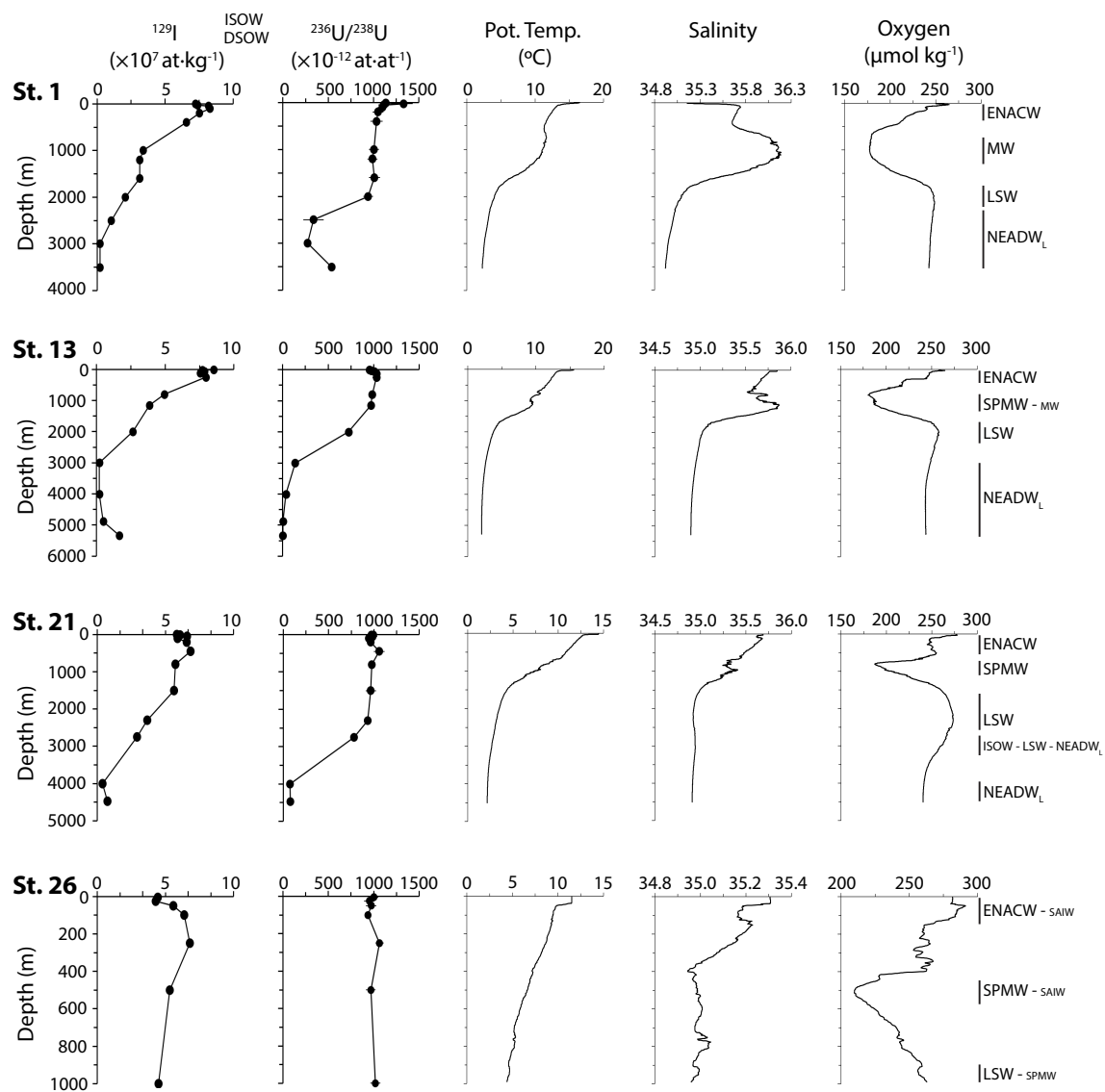
Supplemental Information for

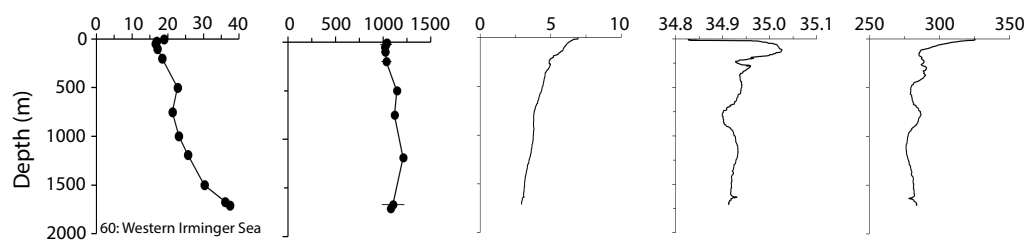
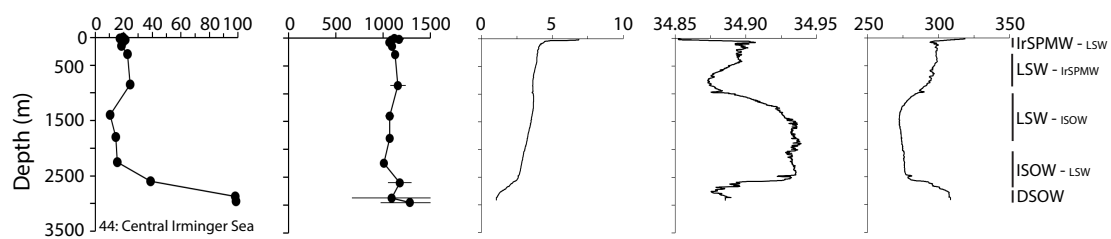
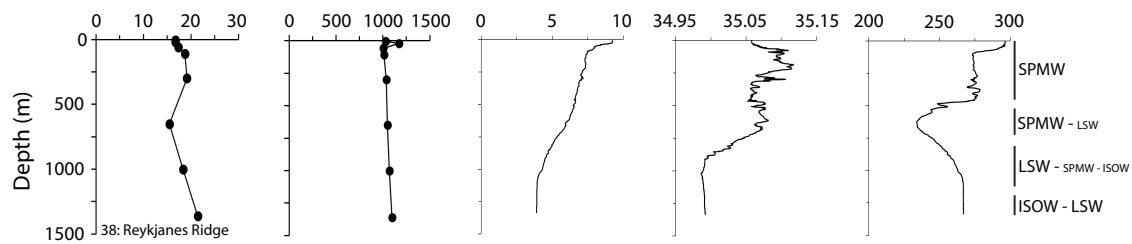
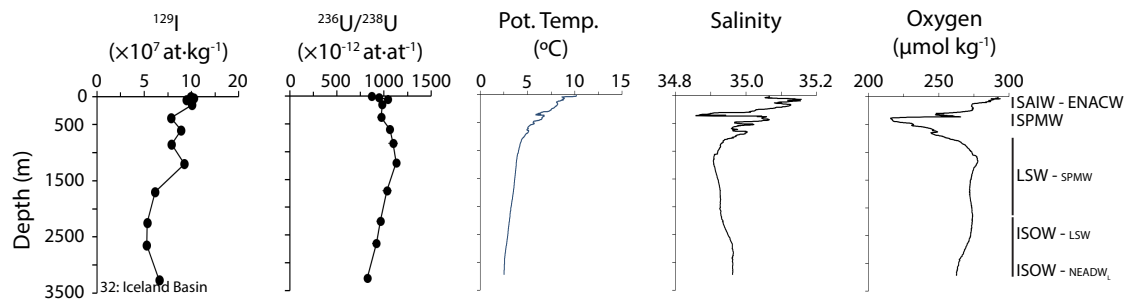
Tracing water masses with ^{129}I and ^{236}U in the subpolar North Atlantic along the GEOTRACES GA01 section

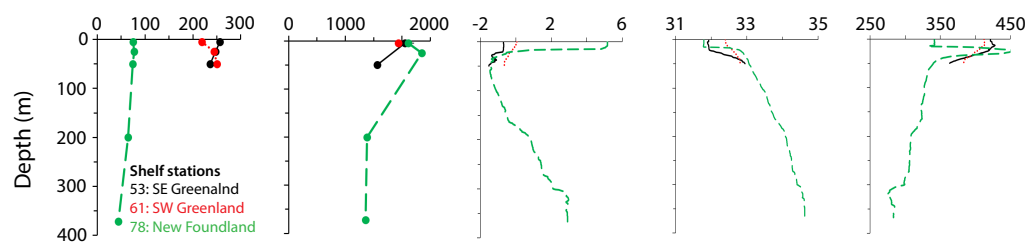
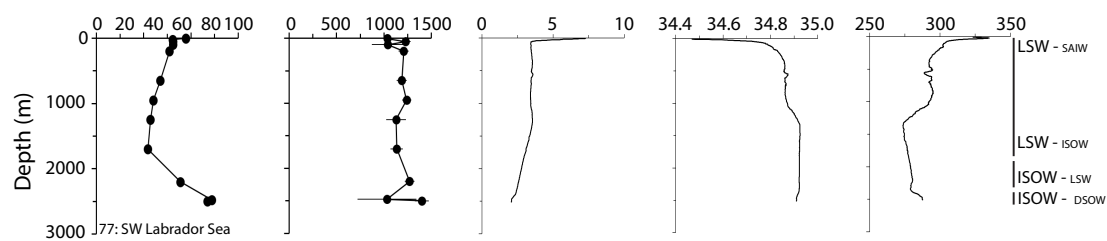
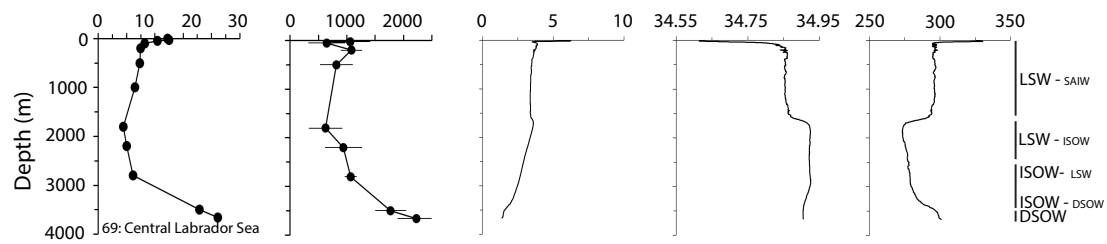
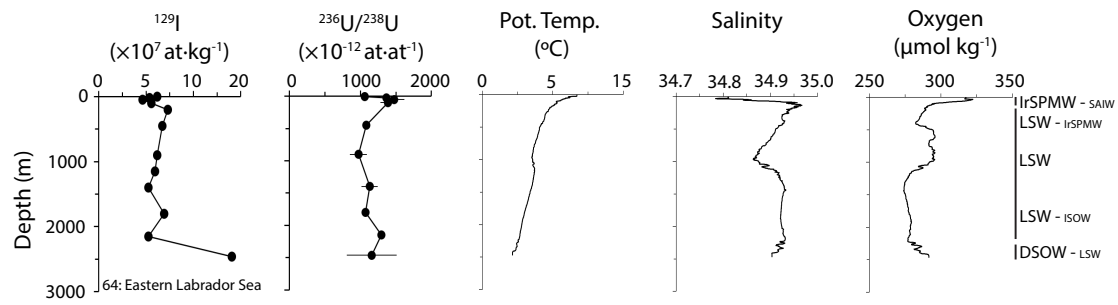
Castrillejo et al.,

Correspondence to: Maxi Castrillejo (maxic@phys.ethz.ch)

S1. Depth profiles of ^{129}I concentrations, $^{236}\text{U}/^{238}\text{U}$ atom ratios, potential temperature, salinity and dissolved oxygen concentration obtained during the GEOVIDE cruise in spring 2014. Water mass acronyms in Table 1 of the main text.







S2. Concentrations of ^{129}I in surface seawater for (a) 1993 (Edmonds et al., 2001), (b) 1999 (Alfimov et al., 2004a), (c) 2010 (Gómez-guzmán et al., 2013), (d) 2012 (Vivo-Vilches et al., 2018), (e) 2010 (He et al., 2013b) and (f) 2014 (this work). SAF: Subarctic front. Raw figures were created using Ocean Data View.

